



**GEORGE STREET  
PRIMARY SCHOOL**  
*TOGETHER WE LIVE, LEARN AND VALUE*

# George Street Primary School

## Year 6



**Croeso!**





# PE Day/PE Kit Monday Morning

**Children can come to school in PE kit.**

- Black shorts or joggers
  - Trainers
  - T-shirt
- Suitable outdoor clothing for games in the winter
  - Suitable footwear
  - No jewellery



# Forest school Day/Clothing

## Tuesday Morning

- Children should bring wellies to school to change into.
- Have a warm waterproof coat just in case in rains.
- We will try and get outside as much as we can



# Mobile Phones

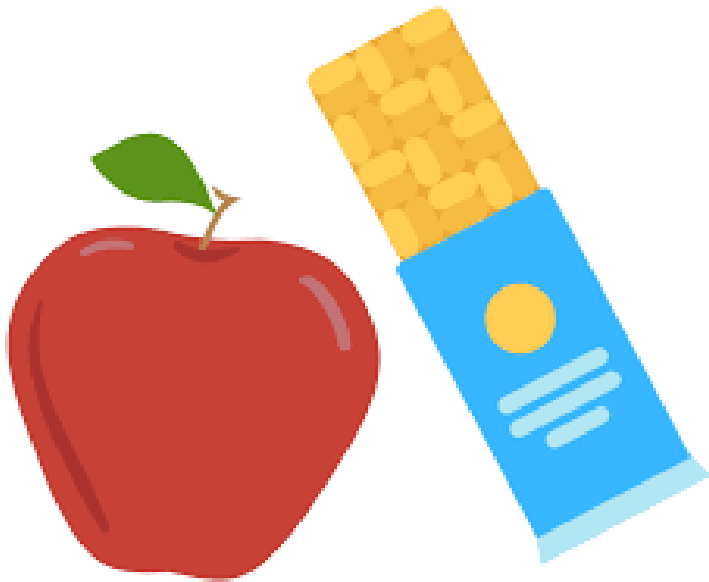


Mobile phones are to be handed in to teachers on arrival to school.

They should only be brought in where children are walking home and must not be turned on until off school premises.

School cannot take responsibility for loss/theft or damage.

# Snack Time



As a healthy school, snacks brought in should be healthy.

Chocolate, crisps and biscuits are not acceptable alternatives.

Suggested snacks: fruit, dried fruit, crackers, cheese.

# Attendance Matters




## Attendance Matters!

100% (The Gold Standard)

95% and above (95% = 9 days absent/45 lessons lost in a school year)

85%-94.9% (85% = 29 days absent/145 lessons lost in a year)

84.9% and below (80% = 38 days absent / 190 lessons lost in a school year)

Zone	Attainment	Legal	Social
	Most likely to achieve their academic potential	Legal responsibility met. No consequences	Unlikely to miss out on social opportunities. Strong friendship groups
	Less likely to achieve their academic potential	The Education Welfare Service and the school will be monitoring your child's attendance closely	Child may miss out on some social opportunities. Less likely to have strong friendship groups
	Unlikely to achieve their academic potential	School can request that the Local Authority issue a FIXED Penalty Notice. Parents can be prosecuted under Section 444 (1) of the Education Act	Likely to miss out on most social opportunities. Research shows increased likelihood of being excluded from friendship groups.

# School Uniform

School red jumper/cardigan

White shirt/polo shirt

Grey/black trousers/skirt/pinafore

Summer dresses for summer

Black shoes/black trainers

**No jewellery except stud earrings**

**No false nails/Make up.**

Personal property – Bags etc needs to be kept on allocated  
pegs





# Term Dates

2024/2025 Academic Year

Term	Term Begins	Half Term Begins	Half Term Ends	Term Ends
<b>Autumn</b>	Monday 02.09.24	Monday 28.10.24	Friday 01.11.24	Friday 20.12.24
<b>Spring</b>	Monday 06.01.25	Monday 24.02.25	Friday 28.02.25	Friday 11.04.25
<b>Summer</b>	Monday 28.04.25	Monday 26.05.25	Friday 30.05.25	Monday 21.07.25



# Home Learning



RENAISSANCE  
**myON**<sup>®</sup>

This half term

‘World at War’

## Manor Adventure 2024

- Letter has been text out today with details regarding our residential trip.
- If you have any questions, please stay at the end.