



**GEORGE STREET
PRIMARY SCHOOL**
TOGETHER WE LIVE, LEARN AND VALUE

George Street Primary School

Year 6



Croeso!



PE Day/PE Kit Friday Afternoon

Children can come to school in PE kit.

- Black shorts or joggers
 - Trainers
 - T-shirt
- Suitable outdoor clothing for games in the winter
 - Suitable footwear
 - No jewellery



Forest school Day/Clothing

Friday afternoon

- Children should bring wellies to school to change into.
- Have a warm waterproof coat just in case in rains.
- We will try and get outside as much as we can



Mobile Phones

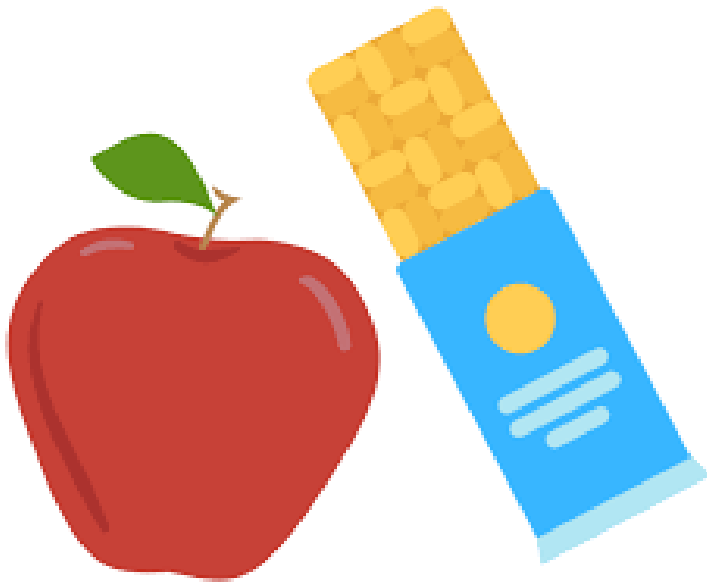


Mobile phones are to be handed in to teachers on arrival to school.

They should only be brought in where children are walking home and must not be turned on until off school premises.

School cannot take responsibility for loss/theft or damage.

Snack Time



As a healthy school, snacks brought in should be healthy.

Chocolate, crisps and biscuits are not acceptable alternatives.

Suggested snacks: fruit, dried fruit, crackers, cheese.

Attendance Matters




Attendance Matters!

100% (The Gold Standard)

95% and above (95% = 9 days absent/45 lessons lost in a school year)

85%-94.9% (85% = 29 days absent/145 lessons lost in a year)

84.9% and below (80% = 38 days absent / 190 lessons lost in a school year)

Zone	Attainment	Legal	Social
	Most likely to achieve their academic potential	Legal responsibility met. No consequences	Unlikely to miss out on social opportunities. Strong friendship groups
	Less likely to achieve their academic potential	The Education Welfare Service and the school will be monitoring your child's attendance closely	Child may miss out on some social opportunities. Less likely to have strong friendship groups
	Unlikely to achieve their academic potential	School can request that the Local Authority issue a FIXED Penalty Notice. Parents can be prosecuted under Section 444 (1) of the Education Act	Likely to miss out on most social opportunities. Research shows increased likelihood of being excluded from friendship groups.

School Uniform

School red jumper/cardigan

White shirt/polo shirt

Grey/black trousers/skirt/pinafore

Summer dresses for summer

Black shoes/black trainers

No jewellery except stud earrings

No false nails/Make up.

Personal property – Bags etc needs to be kept on allocated
pegs

Nike Pro style shorts are NOT allowed.



Term Dates

Term	Term Begins	Half Term Begins	Half Term Ends	Term Ends
Autumn	Monday 01.09.25	Monday 27.10.25	Friday 31.10.25	Friday 19.12.25
Spring	Monday 05.01.26	Monday 16.02.26	Friday 20.02.26	Friday 27.03.26
Summer	Monday 13.04.26	Monday 25.05.26	Friday 29.05.26	Monday 20.07.26

Home Learning



RENAISSANCE
myON[®]



This half term

‘World War 2’